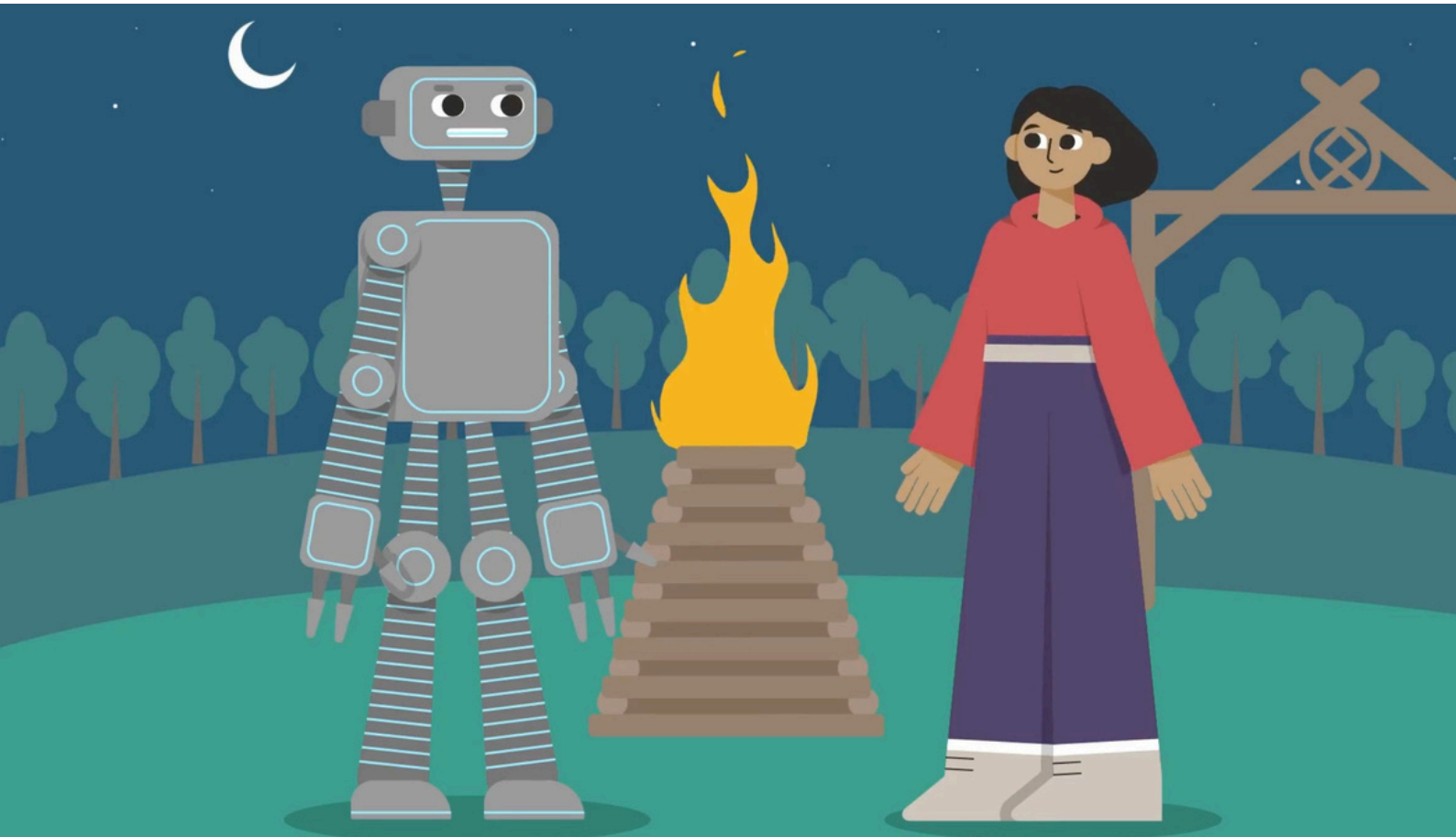


Book2
**Meet
Mei
And
Bobe**



Read about Artificial Intelligence before watching the Video 2 of the Mei and Bobe series.

Reading: Does Artificial Intelligence (AI 人工智 慧) possess personhood (人格) ?

Navigating the **era** of Artificial Intelligence can be difficult. Read the paragraphs, then complete the Truth or False exercise on the next page.

- 1** Artificial Intelligence, often **abbreviated** as AI, is a **fascinating** and **rapidly** changing field that involves creating computer systems that can **perform** tasks that usually require human intelligence. But have you ever wondered if AI could be considered as people? Let's explore this idea.
- 2** AI is not a human, but some believe it possesses **qualities** that are similar to human abilities. AI systems can think, learn, and make decisions just like people, though in a different way. They can understand language, **recognize** patterns, and even play games, all without human **intervention**.
- 3** One reason to think of AI as people is their **problem-solving** ability. AI can help us find solutions to **complex** problems, which is a valuable trait in today's world. Additionally, AI can be trained to assist and **interact** with us, making our lives easier and more convenient. It can even be a source of **companionship** for some individuals.

4

However, it's **essential** to remember that AI **lacks** certain qualities that make us human, like emotions and **consciousness**. While AI can **mimic** human-like **behavior**, it doesn't truly understand or feel as humans do.

5

In conclusion, AI is not a person, but it possesses qualities that are **reminiscent** of human capabilities. AI can be a helpful **companion** in many **aspects** of our lives, but we must always **recognize** the differences between machines and people.

時代 模仿 迷人
 認出 伴侶
 執行
 方面 品質 縮寫的 干涉
 缺乏 意識 複雜的
 友誼 迅速地
 認出 基本的
 行為
 解決問題 互動

After watching the video, circle True or False for each of the below statements.

- 1 AI technology is advancing slowly. True False
- 2 Humans need to help AI complete creative tasks. True False
- 3 AI can help humans not feel so lonely. True False
- 4 Some AI abilities can remind us of human abilities. True False

Do you know where Hong Kong, Berlin, Vilnius are located on a map?

Let's check out Mei and Bobe's flight route!



Look up the words in your dictionary or the internet. Then choose five words and write a sentence with them.

- Luggage (n.) -
- Mistreat (v.) -
- Gorgeous (Adj.) -
- Landscape (n.) -
- Celebration (n.) -
- Countryside (n.) -
- Alight [from a train or airplane] (v.) -
- Self-sufficient (Adj.) -
- Far-fetched (Adj.) -

Example: If you want to be self-sufficient, you need to rely on yourself to provide for yourself.

- 1 _____
- 2 _____
- 3 _____
- 4 _____
- 5 _____

Answer the following comprehension questions from the video.

1. What does Helen think about the airline asking Bobe to travel with the luggage?

2. Why do the Lithuanian communities use solar panels(太陽能板) and wind turbines(風力發電機)?

3. Why do the Lithuanian communities grow their own food and build their own homes?

4. Who participates in the decision making of the Lithuanian communities?

5. Who did not get hurt when Mei's company fired many employees?

Read and Write: Read about Purple Island in Qatar. Then write 80 to 100 words about a special place you would like to visit with your family on vacation.

Trakai Island Castle

Trakai Island Castle, located in Lithuania, is a renowned historical landmark that offers a glimpse into the nation's medieval past. Situated on an island in Lake Galvė, the castle is a striking example of Gothic and Renaissance architecture.

This formidable fortress was constructed in the 14th century and served as the residence of Lithuania's Grand Dukes. Surrounded by serene waters and picturesque landscapes, it provides a picturesque setting that captivates the imagination. Visitors can explore the well-preserved castle, complete with its mighty stone walls, turrets, and drawbridges.

Trakai Island Castle is not only an architectural marvel but also a cultural treasure. It houses a museum showcasing artifacts from Lithuania's history and offers insights into its rich heritage. The castle's picturesque setting on the tranquil lake makes it a popular destination for tourists and history enthusiasts alike. It's a place where history comes alive, making it a valuable stop for those eager to learn about Lithuania's fascinating past.

Now write about a place you would like to visit with your family.

Some examples are Kenting, Yilan, Okinawa, and Bali Island. Use your imagination!

Book 2
MEET MEI AND BOBE

公司名稱:財團法人臺北市典亮慈善基金會
地址：台北市中山區復興北路60號12樓之3

電話：02-27512678

出版時間：2023年10月

有著作權 侵害必究

